

Menu

1. Amplifier Module-Coaxial2	6. Cable Assembly 19
1.1 Coaxial LNA.....2	7. Filter-Coaxial 20
1.2 High Power LNA (Pout>+20dBm)4	Coaxial Band Pass Filter20
1.3 Coaxial Power Amplifier.....5	8. Equalizer 20
1.4 High Power Amplifier(>=+33dBm)7	9. Analog Phase Shifter 21
1.5 Broadband Amplifier8	9.1 180 Degree21
1.6 Optical Modulator Driver10	9.2 360 Degree21
1.7 Low Phase Noise Amplifier11	10. Limiter 21
1.8 Bench-Top Amplifier(+220V)11	11. DC Block 22
2. Mixer Modules-Coaxial 12	12. Attenuator 23
3. IQ Mixer-Coaxial 12	12.1 Analog Voltage Control Attenuator23
4. Frequency Source 13	12.2 Digital Control Attenuator23
4.1 X2 Active Coaxial Multiplier13	12.3 Fixed Attenuator23
4.2 X3 Active Coaxial Multiplier13	13. Termination 23
4.3 X4 Active Coaxial Multiplier14	14. Switch 24
4.3 Passive Multiplier16	14.1 MMIC Based Switch.....24
4.4 Frequency Divider.....16	14.2 GaAs PIN Reflector Based Switch25
4.5 VCO Module.....16	15. Power Divider 26
4.6 PDRO Single Frequency Source17	15.1 Resistor Power Divider26
4.7 PLL Single Frequency Source17	15.2 Wilkinson Power Divider.....26
5. Adapter-Coaxial 18	16. Hybrid 27
In-Series Adapter18	90 Degree Hybrid27
Between Series Adapter18	180 Degree Hybrid.....27
90 Degree Right-Angle Adapter18	17. Directional Coupler 27
Flange Adapter19	18. Power Detector 28
	19. Bias Tee 28



1. Amplifier Module-Coaxial

1.1 Coaxial LNA

Part Number	Low Freq. (GHz)	High Freq. (GHz)	Gain (dB)	NF (dB)	P1dB (dBm)	Current (mA)	Vd (V)	Connector
AT-LNA-0020-1503X	50kHz	20	15	3	15	80	8	SMA
AT-LNA-0020-2803X	50kHz	20	28	3	15	160	8	SMA
AT-LNA-0022-3503H	50kHz	22	35	3	15	120	12	SMA
AT-LNA-0043-2304Y	50kHz	43	23	4	10	170	5	2.92mm
AT-LNA-0043-3504Y	50kHz	43	35	4	10	300	5	2.92mm
AT-LNA-0043-2304C	0.01	43	23	4	13	170	5	2.92mm
AT-LNA-0043-3504C	0.01	43	35	4	13	300	5	2.92mm
AT-LNA-0043-5004C	0.01	43	50	4	13	380	5	2.92mm
AT-LNA-0050-2305C	0.01	50	23	5	13	170	8	2.4mm
AT-LNA-0050-3505C	0.01	50	35	5	13	300	8	2.4mm
AT-LNA-0003-2801X	0.1	3.5	28	0.8	15	100	8	SMA
AT-LNA-0018-2325X	0.1	18	23	2.5	15	80	5	SMA
AT-LNA-0018-3825H-5V	0.1	18	38	2.5	10	130	5	SMA
AT-LNA-0018-4025H-12V	0.1	18	40	2.5	15	150	8	SMA
AT-LNA-0018-4002X	0.1	18	40	2	15	120	8	SMA
AT-LNA-0020-3502H	0.1	20	35	2	10	100	5	SMA
AT-LNA-00208-3502S	0.2	8	35	2	16	160	8	SMA
AT-LNA-00508-2002S	0.5	8	20	1.8	16	80	8	SMA
AT-LNA-0118-1302X	1	18	13	1.8	15	50	8	SMA
AT-LNA-0118-2702X	1	18	27	1.8	15	100	8	SMA
AT-LNA-0118-4002X	1	18	40	1.8	15	130	8	SMA
AT-LNA-0243-2504C	2	43	25	4	10	150	5	2.92mm
AT-LNA-0243-3804C	2	43	38	4	10	250	5	2.92mm
AT-LNA-0250-2505C	2	50	25	5	10	200	5	2.4mm
AT-LNA-0250-3805C	2	50	38	5	10	300	5	2.4mm
AT-LNA-0618-2215X	6	18	22	1.5	13	50	5	SMA
AT-LNA-1550-4505XC	15	50	45	5	16	400	8	2.4mm
AT-LNA-1526-1502Y	15	26.5	15	2	3	50	5	2.92mm
AT-LNA-1826-3202XY	18	26.5	32	2	10	150	5	2.92mm
AT-LNA-1832-2503Y	18	32	25	3	10	200	8	2.92mm
AT-LNA-1832-4503Y	18	32	45	3	10	300	8	2.92mm
AT-LNA-1840-3335Y	18	40	30	3.5	13	200	8	2.92mm
AT-LNA-1840-4035L	18	40	40	3.5	13	220	5	2.92mm
AT-LNA-1840-4035X	18	40	40	3.5	20	350	8	2.92mm
AT-LNA-1840-5304L	18	40	53	4	13	250	5	2.92mm
AT-LNA-2244-2325	22	44	23	2.5	6	50	5	2.4mm
AT-LNA-2244-3825	22	44	38	2.5	6	150	5	2.4mm
AT-LNA-4060-1606VC	40	60	16	6	10	150	5	1.85mm
AT-LNA-4060-3506VC	40	60	35	6	14	250	5	1.85mm

Part Number	Low Freq.	High Freq.	Gain	NF	P1dB	Current	Vd	Connector
	(GHz)	(GHz)	(dB)	(dB)	(dBm)	(mA)	(V)	
AT-LNA-5565-1805VG	52	67	18	5	8	100	5	1.85mm
AT-LNA-5565-3505VG	52	67	35	5	8	200	5	1.85mm

NEW Released

AT-LNA-1840-4035X:

18-40GHz High gain, high power Low Noise Amplifier, 2.92mm Female

Advantages

- ✓ Frequency: 18-40GHz
- ✓ Small signal gain: 40dB
- ✓ NF=3.5dB
- ✓ Pout=+20dBm
- ✓ Single Power Supply



AT-LNA-0250-2505C

2-50GHz Low Noise Amplifier, 2.4mm Female, 25dB and 38dB gain available.

Advantages

- ✓ Frequency: 2-50GHz
- ✓ Small signal gain: 25/38dB
- ✓ NF=5dB
- ✓ Pout=+15dBm
- ✓ Single Power Supply

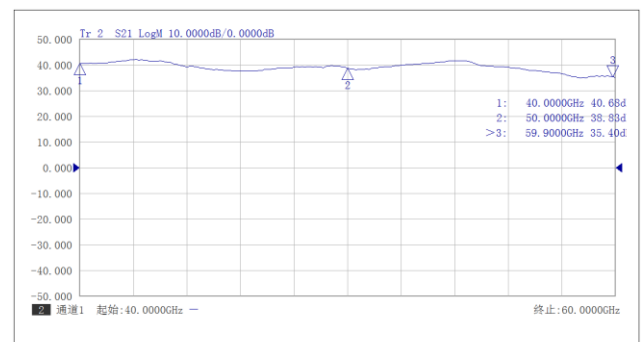


AT-LNA-4060-3306VC

40-60GHz high gain Low Noise Amplifier, 1.85mm Female

Advantages

- ✓ Frequency: 40-60GHz
- ✓ Small signal gain: 33dB
- ✓ Noise Figure 6dB
- ✓ Pout=+16dBm
- ✓ Single Power Supply





1.2 High Power LNA (Pout>+20dBm)

Part Number	Low Freq. (GHz)	High Freq. (GHz)	Gain (dB)	NF (dB)	P1dB (dBm)	Current (mA)	Vd (V)	Connector
AT-LNA-0020-4303P25	0.01	20	43	3	24	350	12	SMA
AT-LNA-0018-4002P25	0.1	18	40	2	24	350	12	SMA
AT-LNA-0043-2504HP	0.01	43	25	4	20	250	8	2.92mm
AT-LNA-0043-3804HP	0.01	43	38	4	20	350	8	2.92mm
AT-LNA-0043-5304HP	0.01	43	53	4	20	450	8	2.92mm
AT-BB-0050-3820C	0.01	50	38	5	20	350	8	2.4mm
AT-LNA-0118-4002P29	1	18	40	2	28	450	12	SMA
AT-LNA-0118-2702P22	1	18	27	2	20	250	8	SMA
AT-LNA-0218-4502P23	2	18	45	2	22	350	12	SMA
AT-LNA-0243-2504HP	2	43	25	4	20	220	8	2.92mm
AT-LNA-0243-4204HP	2	43	42	4	20	330	8	2.92mm
AT-LNA-0250-3305P23	2	50	33	5	20	550	5	2.4mm
AT-LNA-0618-3002P27	6	18	30	2.5	26	450	12	SMA
AT-LNA-0618-5025P29	6	18	50	2.5	27	600	12	SMA
AT-LNA-1826-3802P20	18	26.5	38	2	18	350	5	2.92mm
AT-LNA-1826-5002P28	18	26.5	50	2	27	900	8	2.92mm
AT-LNA-1840-4035X	18	40	40	3.5	20	350	8	2.92mm
AT-LNA-1840-6004HP	18	40	60	4	20	400	8	2.92mm
AT-LNA-2244-4025P20	22	44	20	2.5	20	220	8	2.4mm
AT-LNA-2244-4525P23	22	44	45	2.5	22	550	5	2.4mm

NEW Released



1.3 Coaxial Power Amplifier

Part Number	Low Freq.	High Freq.	Gain	P1dB	Psat	Current	Vd	Connector
	(GHz)	(GHz)	(dB)	(dBm)	(dBm)	(mA)	(V)	
AT-PA-0120-1029X	1	20	10	28	29	350	12	SMA
AT-PA-0120-2529X	1	20	25	28	29	500	12	SMA
AT-PA-0220-1820X	2	20	18	19	20	150	8	SMA
AT-PA-0618-3327X	6	18	33	26	27	480	12	SMA
AT-PA-0620-1318X	6	20	13	17	18	130	8	SMA
AT-PA-1550-1517X	15	50	15	15	17	190	8	2.4mm
AT-PA-1550-3017X	15	50	30	15	17	380	8	2.4mm
AT-PA-1823-5020X	18	23	50	18	29	350	8	SMA
AT-PA-1828-2728X	18	28	27	26	28	800	8	2.92mm
AT-PA-1840-3020X	18	40	30	19	20	300	8	2.92mm
AT-PA-1840-3028XT	18	40	30	27	28	1300	6	2.92mm
AT-PA-1840-3330GN	18	40	33	28	30	650	22	2.92mm
AT-LNA-1840-6004HP	18	40	60	18	20	300	8	2.92mm
AT-PA-2040-3023Y	20	40	30	22	23	560	8	2.92mm
AT-PA-2050-2023T	20	50	20	20	23	500	8	2.4mm
AT-PA-2050-3323T	20	50	33	20	23	700	5	2.4mm
AT-PA-2247-1823C	22	47	18	22	23	500	8	2.4mm
AT-PA-2731-5020X	27	31	50	18	20	350	8	2.92mm
AT-PA-2731-2522X	27	31	25	20	22	150	8	2.92mm
AT-PA-3337-1326X	33	37	13	25	26	700	8	2.92mm
AT-PA-3337-2826X	33	37	28	25	26	800	8	2.92mm
AT-PA-4060-1520VC	40	60	15	18	20	250	8	1.85mm
AT-PA-4060-3320VC	40	60	33	18	20	500	8	1.85mm
AT-PA-4067-3532GN	40	67	35	29	32	1500	16	1.85mm
AT-PA-3567-1520VC	35	67	15	18	20	250	8	1.85mm
AT-PA-3767-3320VC	37	67	33	18	20	500	8	1.85mm
AT-PA-5070-3020VC	50	70	30	18	20	500	8	1.85mm
AT-PA-5565-1520VG	55	65	15	18	20	250	5	1.85mm
AT-PA-5565-1522VG	55	65	15	20	22	350	5	1.85mm

NEW Released

AT-PA-2040-3023Y

20-40GHz, High gain, Medium Power Amplifier , 2.92mm Female

Advantages

- ✓ Frequency: 20-40GHz
- ✓ Psat:+23dBm
- ✓ Small signal gain: 30dB
- ✓ NF=4dB
- ✓ Single Power Supply

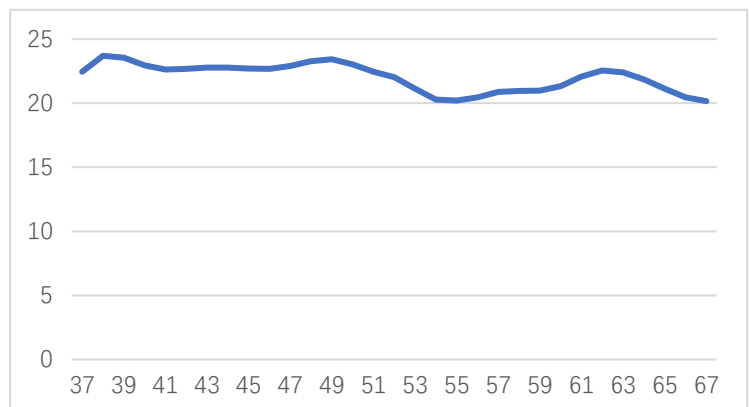


AT-PA-3767-3320VC

37-67GHz Power Amplifier, 1.85mm Female

Advantages

- ✓ Frequency: 37-67GHz
- ✓ P1/Psat:+18/20dBm
- ✓ Small signal gain: 33dB
- ✓ NF=6dB
- ✓ Single Power Supply



1.4 High Power Amplifier($\geq +33\text{dBm}$)

Part Number	Low Freq.	High Freq.	Gain	P1dB	Psat	Current	Vd	Connector
	(GHz)	(GHz)	(dB)	(dBm)	(dBm)	(A)	(V)	
AT-HPA-0206-2534N	2	6	25	33	34	2	10	SMA
AT-HPA-0206-4036N	2	6	40	34	36	2.8	12	SMA
AT-HPA-0206-4038N	2	6	40	36	38	4.5	11	SMA
AT-PHA-0618-3535N	6	18	35	33	35	3	10	SMA
AT-HPA-2227-4034N	22	27	40	32	34	3	8	2.92mm
AT-HPA-2430-4035N	24	30	40	33	35	3	8	2.92mm
AT-HPA-2531-4035N	25	31	40	33	35	3	8	2.92mm
AT-HPA-2640-3533N	26.5	40	33	31	33	3.5	8	2.92mm
AT-HPA-3340-4035N	33	40	40	33	35	3.6	8	2.92mm

NEW Released



AT-HPA-2640-3533N

26.5-40GHz High Power Amplifier, Gain=35dB, Pout=+33dBm

Advantages

- ✓ Frequency: 26-40GHz
- ✓ Psat:+33dBm
- ✓ Small signal gain: 35dB
- ✓ Single Power Supply

Application

- ✓ 5G Communication
- ✓ Test Equipment
- ✓ ROF (RF Over Fiber)
- ✓ Radar System

AT-HPA-3340-4035N

33-40GHz, High Gain, High Power=+35dBm
2.92mm Female

Advantages

- ✓ Frequency: 33-40GHz
- ✓ Psat:+34.5dBm
- ✓ Small signal gain: 40dB
- ✓ Single Power Supply





1.5 Broadband Amplifier

Part Number	Low Freq.	High Freq.	Gain	P1dB	Psat	Current	Vd	Connector
	(GHz)	(GHz)	(dB)	(dBm)	(dBm)	(mA)	(V)	
AT-BB-0006-1328A	0.01	6	13	27	28	500	15	SMA
AT-BB-0006-2428A	0.01	6	24	27	28	800	15	SMA
AT-BB-0018-2330A	0.1	18	23	28	30	750	16	SMA
AT-BB-0020-3021X	0.01	20	30	20	21	300	9	SMA
AT-BB-0020-3323HC	0.01	20	33	23	22	300	8	SMA
AT-BB-0020-4529HX	0.1	20	45	27	29	450	12	SMA
AT-BB-0026-2327C	0.01	26.5	25	26	27	500	10	SMA
AT-BB-0026-3327C	0.01	26.5	33	26	27	550	10	SMA
AT-BB-0043-2720C	0.01	43	27	19	20	400	8	2.92mm
AT-BB-0043-4320C	0.01	43	43	19	20	600	8	2.92mm
AT-BB-0047-2720C	0.01	47	27	18	20	400	8	2.4mm
AT-BB-0047-4320C	0.01	47	43	18	20	600	8	2.4mm
AT-BB-0050-3820C	0.01	50	38	18	20	600	8	2.4mm
AT-BB-0067-1815C	0.01	67	18	13	15	300	8	1.85mm
AT-BB-0067-2515C	0.01	67	25	13	15	450	8	1.85mm
AT-BB-0367-1815C	3	67	18	13	15	220	8	1.85mm
AT-BB-0367-2515C	3	67	25	13	15	350	8	1.85mm

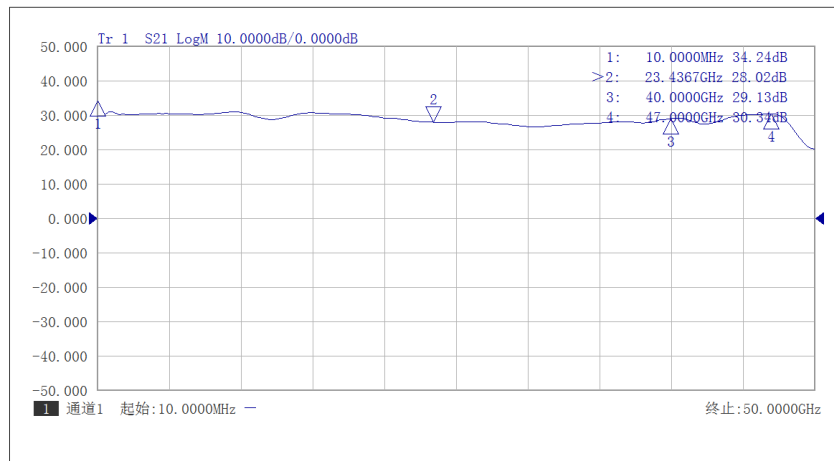
NEW Released

AT-BB-0043-2720C

10MHz-43/47GHz, Broadband Amplifier,
2.92mm, 2.4mm, 1.85mm available

Advantages

- ✓ Frequency: 10MHz-43GHz, 10MHz-47GHz, 10MHz-67GHz
- ✓ Small signal gain: 27dB, 43dB
- ✓ Noise Figure 6dB
- ✓ Pout=+22dBm
- ✓ Single Power Supply



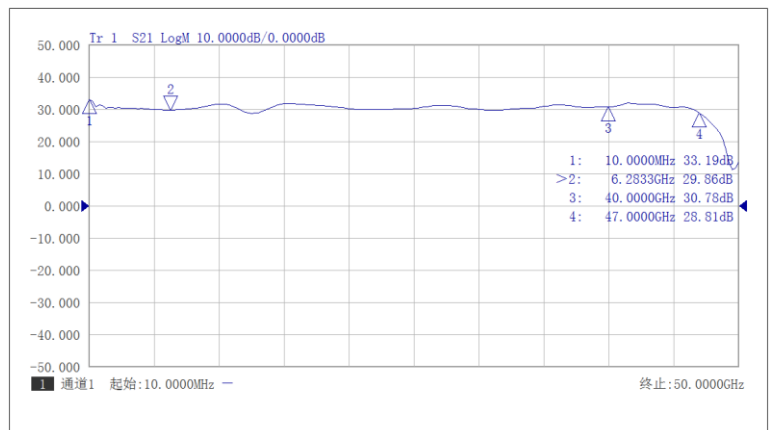
1.6 Optical Modulator Driver

Part Number	Low Freq.	High Freq.	Gain	P1dB	Psat	Current	Vd	Connector
	(kHz)	(GHz)	(dB)	(dBm)	(dBm)	(mA)	(V)	
AT-BBLF-0030-2528A	50	30	25	27	28	400	12	2.92mm
AT-BBLF-0043-2720C	50	43	27	19	20	400	9	2.92mm
AT-BBLF-0047-2720C	50	47	27	18	20	400	9	2.4mm
AT-BBLF-0060-1815C	50	60	18	13	15	300	8	1.85mm
AT-BBLF-0067-1815C	50	67	18	13	15	300	8	1.85mm
AT-BBLF-0067-2515C	50	67	25	13	15	450	8	1.85mm

NEW Released

AT-BBLF-0047-2720C

50kHz-43/47GHz, Broadband Amplifier for Optical Modulator Driver

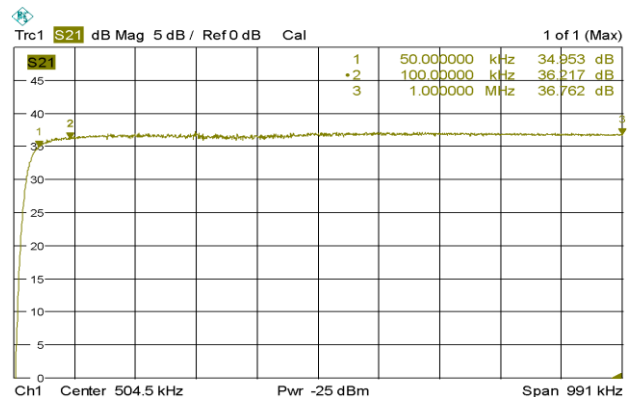


Advantages

- ✓ Frequency: 50kHz-43/47GHz
- ✓ Psat:+22dBm
- ✓ Vout=7.9Vpp
- ✓ Small signal gain: 27dB
- ✓ Single Power Supply

Application

- ✓ Optical Modulator Driver
- ✓ 5G Communication
- ✓ Test Equipment
- ✓ ROF (RF Over Fiber)
- ✓ Radar Communication

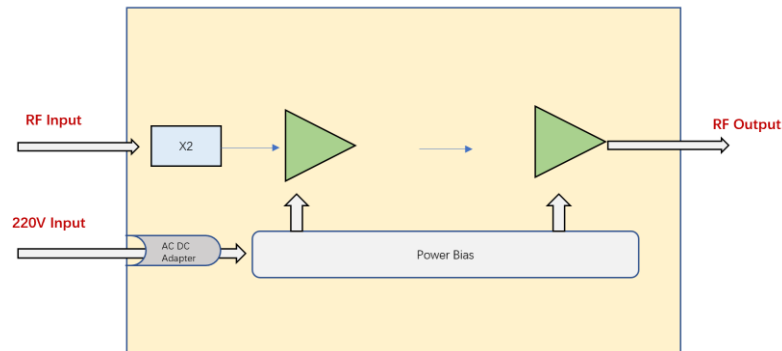


1.7 Low Phase Noise Amplifier

Part Number	Low Freq.	High Freq.	Gain	Psat	Phase Noise	Vd	Connector
	(GHz)	(GHz)	(dB)	(dBm)	dBc/Hz 10kHz		
AT-LPNA-0220-1520C	2	20	15	+20	-163	8	SMA
AT-LPNA-0618-1518C	6	18	15	+18	-163	8	SMA
AT-LPNA-0822-1515C	8	22	15	+15	-163	8	SMA

1.8 Bench-Top Amplifier(+220V)

Part Number	Low Freq.	High Freq.	Gain	P1dB	Psat	NF	Vd	Connector
	(GHz)	(GHz)	(dB)	(dBm)	(dBm)	(dB)	(V)	
AT-BTLNA-0250-3805C	2	50	38	10	13	5	220	2.4mm
AT-BTBB-0043-2720C	0.01	43	43	18	20	6	220	2.92mm
AT-BTBB-0047-2720C	0.01	47	43	18	20	6	220	2.4mm
AT-BTBB-0067-1815C	0.01	67	18	12	15	6	220	1.85mm
AT-BTBB-0067-2515C	0.01	67	25	13	15	6	220	1.85mm



2. Mixer Modules-Coaxial

Part Number	RF/LO Low(GHz)	RF/LO (GHz)	IF Low /GHz	IF High (GHz)	LO Drive (dBm)	Loss [dB]	ISO L-R [dB]	IIP3 [dBm]	Connector
AT-MIX-1432A	14	32	DC	10	11 to 20	10	40	22	2.92mm
AT-MIX-1844	18	44	DC	10	11 to 20	10	40	22	2.92mm
AT-MIX-2238A	22	38	DC	8	9 to 13	8	40	12	2.92mm
AT-MIX-5067A	50/40	67	DC	26	12	10	30	12	1.85mm

3. IQ Mixer-Coaxial

Part Number	RF/LO Low /GHz	RF/LO High /GHz	IF Low /MHz	IF High /GHz	CL[dB]	Image Rejection [dB]	Connector
AT-IQM-0626A	6	26.5	DC	5	8.5	29	SMA
AT-IQM-2232A	22	32	DC	5	8.5	29	2.92mm
AT-IQM-2040A	20	40	DC	12	8.5	29	2.92mm

NEW Released

4. Frequency Source

4.1 X2 Active Coaxial Multiplier

Part Number	Type	Fin Low /GHz	Fin High /GHz	Fout Low/GHz	Fout High/GHz	Input /dBm	Pout	Connector
AT-AM2-0826-13C	Active X2	4	13.5	8	26.5	+3	+13	2.92mm
AT-AM2-1232-13L	Active X2	5	15	10	30	0	+13	2.92mm
AT-AM2-1840-13XC	Active X2	9	20	18	40	+3	+13	2.92mm
AT-AM2-1840-13X2	Active X2	9	20	18	40	+13	+13	2.92mm
AT-AM2-1844C	Active X2	9	22	18	44	+3	+0	2.92mm
AT-AM2-1844-17XC	Active X2	9	22	18	44	+3	+17	2.92mm
AT-AM2-1844-20XC	Active X2	9	22	18	44	+3	+20	2.92mm
AT-AM2-1844-20X2	Active X2	9	22	18	44	+13	+20	2.92mm
AT-AM2-2050-23T	Active X2	10	25	20	50	+8	+23	2.4mm
AT-AM2-3567-18C	Active X2	17.5	33.5	35	67	+13	+18	1.85mm

4.2 X3 Active Coaxial Multiplier

Part Number	Type	Fin Low /GHz	Fin High /GHz	Fout Low/GHz	Fout High/GHz	Input /dBm	Pout	Connector
AT-AM3-2227-23T	Active X3	22	27	7.33	9	+5	+23	2.92mm
AT-AM3-3234-23T	Active X3	32	34.5	8	11.5	+5	+23	2.92mm
AT-AM3-4245-20T	Active X3	42	45	14	15	+5	+20	2.4mm
AT-AM5-3234-23T	Active X5	32	34.5	6.4	6.9	+5	+23	2.92mm
AT-AM5-4245-20T	Active X5	42	45	8.4	9	+5	+20	2.4mm

AT-AM2-1844-20XC

X2 Active Frequency Doubler, 18-44GHz, Pout=+20dBm

Feature

- ✓ Frequency: 18-44GHz
- ✓ Pout: +20dBm typical
- ✓ Input: 9-22GHz
- ✓ Low Harmonics





4.3 X4 Active Coaxial Multiplier

Part Number	Type	Fin Low /GHz	Fin High /GHz	Fout Low/GHz	Fout High/GHz	Input /dBm	Pout	Connector
AT-AM4-1840-13XC	Active X4	4.5	11	18	44	+3	+13	2.92mm
AT-AM4-1844-20XC	Active X4	4.5	11	18	44	+3	+20	2.92mm
AT-AM4-2040-13	Active X4	5	10	20	40	+13	+13	2.92mm
AT-AM4-2040-20	Active X4	5	10	20	40	+13	+20	2.92mm
AT-AM4-1852-17X	Active X4	4.5	13	18	52	+13	+17	2.4mm
AT-AM4-2050-22T	Active X4	5	12.5	20	50	+15	+22	2.4mm
AT-AM4-2050-22TC	Active X4	5	12.5	20	50	+3	+22	2.4mm
AT-AM4-2060-13C	Active X4	5	15	20	60	+13	+13	1.85mm
AT-AM4-3560	Active X4	8.75	15	35	60	+13	-3	1.85mm
AT-AM4-4060-10VC	Active X4	10	15	40	60	+13	+10	1.85mm
AT-AM4-3567-18C	Active X4	8.75	16.75	35	67	+13	+18	1.85mm

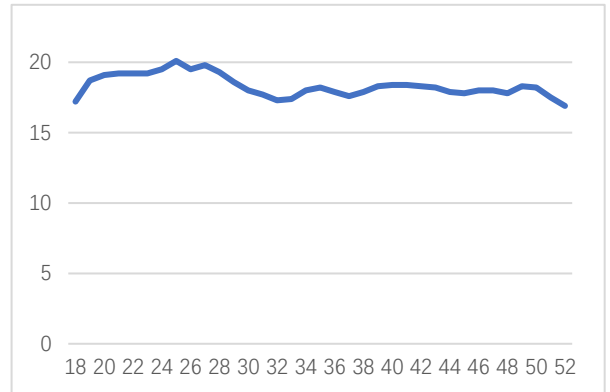
NEW Released

AT-AM4-1852-17X

X4 Active Frequency Multiplier, 18-52GHz, Pout=+17dBm

Feature

- ✓ Frequency: 18-52GHz
- ✓ Pout: +17dBm typical
- ✓ Input: 4.5-11GHz
- ✓ Low Harmonics



AT-AM4-3567-18C

X4 Active Frequency Multiplier, 35-67GHz, Pout=+18dBm
1.85mm Female

Feature

- ✓ Frequency: 35-67GHz
- ✓ Pout: +17dBm typical
- ✓ Input: 8.75-16.75GHz
- ✓ Low Harmonics



4.3 Passive Multiplier

Part Number	Type	FinLow /GHz	Fin High /GHz	Fout Low/GHz	Fout High/GHz	Dirve /dBm	CL /DB	Connector
AT-PM2-1840C	Passive X2	9	20	18	40	17	-15	2.92mm
AT-PM2-1850C	Passive X2	9	25	18	50	17	-15	2.4mm
AT-PM2-2060C	Passive X2	10	30	20	60	7	-11	1.85mm
AT-PM2-4067A	Passive X2	20	33.5	40	67	10	-12	1.85mm
AT-PM3-5070M	Passive X3	16.6	23.33	50	70	18	-18	1.85mm
AT-PM2-3080-1F	Passive X2	15	40	30	80	13	-13	1.0mm

4.4 Frequency Divider

Part Number	Type	Input Low (GHz)	Input High (GHz)	Input Power (dBm)	Output Power (dBm)	100kHz SSB Phase Noise (dBc/Hz)	Connector
AT-FD2-30	Divide-by-2	0.5	30	-15 to +8	-3	-152	2.92mm
AT-FD4-30	Divide-by-4	0.5	30	-15 to +8	-3	-152	2.92mm
AT-FD8-30	Divide-by-8	0.5	30	-15 to +8	-3	-152	2.92mm
AT-FDN-30	N=1/2/4/8	0.5	30	-15 to +8	-3	-152	2.92mm

4.5 VCO Module

Part Number	Type	Freq Low (GHz)	Freq High (GHz)	Output Power (dBm)	Vtune	Connector
AT-VCO-0408A	VCO	4	8	+8	0~18	SMA
AT-VCO-0408A-20	HP VCO	4	8	+20	0~18	SMA
AT-VCO-0510A	VCO	5	10	+3	0~18	SMA
AT-VCO-0510A-20	HP VCO	5	10	+20	0~18	SMA
AT-VCO-0612A	VCO	6	12	0	0~23	SMA
AT-VCO-0612A-15	HP VCO	6	12	+15	0~23	SMA
AT-VCO-0812X	VCO	8	12	+5	0~20	SMA
AT-VCO-0812X-20	VCO	8	12	+20	0~20	SMA
AT-VCO-0816A	VCO	8	16	+3	0~23	SMA
AT-VCO-0816A-20	HP VCO	8	16	+20	0~23	SMA
AT-VCO-1020A	VCO	10	20	+3	0~23	SMA
AT-VCO-1020A-10	MP VCO	10	20	+10	0~23	SMA
AT-VCO-1020A-13	MP VCO	10	20	+13	0~23	SMA
AT-VCO-1020A-18	HP VCO	10	20	+18	0~23	SMA
AT-VCO-2040A-20	HP VCO	20	40	+20	0~23	2.92mm
AT-VCO-3350A-20-24F	HP VCO	33	50	+20	0~23	2.4mm
AT-VCO-4060A-18VC	HP VCO	40	60	+18	0~10	1.85mm

4.6 PDRO Single Frequency Source

Part Number	Reference	Frequency (GHz)	Output Power (dBm)	Harmonics	Spurs	100kHz Phase Noise (dBc/Hz)	Connector
AT-PDRO-9R4-ER	External	9.4GHz	+10	-20	-70	-120	SMA
AT-PDRO-12-ER	External	12GHz	+10	-20	-70	-120	SMA
AT-PDRO-18-ER	External	18GHz	+10	-20	-70	-110	SMA
AT-PDRO-28-ER	External	28GHz	+10	-20	-70	-108	SMA
AT-PDRO-9R4-IR	Internal	9.4GHz	+10	-20	-70	-120	SMA
AT-PDRO-11-IR	Internal	11GHz	+10	-20	-70	-120	SMA
AT-PDRO-18-IR	Internal	18GHz	+10	-20	-70	-110	SMA
AT-PDRO-28-IR	Internal	28GHz	+10	-20	-70	-108	SMA
AT-PDRO-XX-IR	Internal	XX.XGHz	+10	-20	-70	-108	SMA

4.7 PLL Single Frequency Source

Part Number	Reference	Frequency (GHz)	Output Power (dBm)	Harmonics	Spurs	Connector
AT-SPF-11GHz	Internal	11GHz	+13	-20	-70	SMA
AT-SPF-11.5GHz	Internal	11.5GHz	+13	-20	-70	SMA
AT-SPF-11.75GHz	Internal	11.75GHz	+13	-20	-70	SMA
AT-SPF-13GHz	Internal	13GHz	+13	-20	-70	SMA
AT-SPF-14.5GHz	Internal	14.5GHz	+13	-20	-70	SMA
AT-SPF-14.75GHz	Internal	14.75GHz	+13	-20	-70	SMA
AT-SPF-XX.XXGHz	Internal	xx.xxGHz	+13	-20	-70	SMA

5. Adapter-Coaxial

In-Series Adapter

Part Number	Type	Low Fre GHz	High Fre GHz	Connector #1	Connector #2	Insertion Loss /dB	VSWR
AT-AP-10X10X	In-Series	DC	110	1.0mm	1.0mm	0.8	1.35
AT-AP-18X18X	In-Series	DC	67	1.85mm	1.85mm	0.5	1.25
AT-AP-24X24X	In-Series	DC	50	2.4mm	2.4mm	0.5	1.25
AT-AP-29X29X	In-Series	DC	40	2.92mm	2.92mm	0.35	1.2
AT-AP-35X35X	In-Series	DC	32	3.5mm	3.5mm	0.2	1.2
AT-AP-SXSX	In-Series	DC	26.5	SMA	SMA	0.2	1.15
AT-AP-NXNX	In-Series	DC	18	N	N	0.2	1.15
AT-AP-BXBX	In-Series	DC	2	BNC	BNC	0.2	1.15

Between Series Adapter

Part Number	Type	Low Fre GHz	High Fre GHz	Connector #1	Connector #2	Insertion Loss /dB	VSWR
AT-AP-10X18X	Between-Series	DC	67	1.0mm	1.85mm	0.8	1.35
AT-AP-18X24X	Between-Series	DC	50	1.85mm	2.4mm	0.4	1.3
AT-AP-18X29X	Between-Series	DC	40	1.85mm	2.92mm	0.35	1.25
AT-AP-18X35X	Between-Series	DC	32	1.85mm	3.5mm	0.3	1.2
AT-AP-24X29X	Between-Series	DC	40	2.4mm	2.92mm	0.2	1.2
AT-AP-24X35X	Between-Series	DC	32	2.4mm	3.5mm	0.2	1.2
AT-AP-24XSX	Between-Series	DC	26.5	2.4mm	SMA	0.2	1.2
AT-AP-29X35X	Between-Series	DC	32	2.9mm	3.5mm	0.2	1.2
AT-AP-29XSX	Between-Series	DC	26.5	2.9mm	SMA	0.2	1.2
AT-AP-35XSX	Between-Series	DC	26.5	3.5mm	SMA	0.2	1.2
AT-AP-NXSX	Between-Series	DC	18	N	SMA	0.15	1.15

90 Degree Right-Angle Adapter

Part Number	Type	Low Fre GHz	High Fre GHz	Connector #1	Connector #2	Insertion Loss /dB	VSWR
AT-AP-29X29X-RA	Right-Angle	DC	40	2.92mm	2.92mm	0.5	1.2
AT-AP-35X35X-RA	Right-Angle	DC	32	3.5mm	3.5mm	0.2	1.2
AT-AP-SXSX-RA	Right-Angle	DC	26.5	SMA	SMA	0.2	1.15
AT-AP-NXNX-RA	Right-Angle	DC	18	N	N	0.2	1.15



Flange Adapter

Part Number	Type	Low Fre GHz	High Fre GHz	Connector #1	Connector #2	Insertion Loss /dB	VSWR
AT-AP-SFSF-FL	Flange	DC	26.5	SMA	SMA	0.2	1.15
AT-AP-KFKF-FL	Flange	DC	40	2.92mm	2.92mm	0.5	1.2
AT-AP-24F24F-FL	Flange	DC	50	2.4mm	2.4mm	0.8	1.2
AT-AP-18F18F-FL	Flange	DC	67	1.85mm	1.85mm	1	1.3

6. Cable Assembly

Part Number	Frequency /GHz	Insertion Loss /Db	VSWR	Diameter /mm	Connector
AF110 Series	DC-110	12.5	1.45	4.5	1.0mm
PS67 Series	DC-67	5	1.4	10	1.85mm
PS50 Series	DC-50	3.3	1.3	10	2.4mm
PS40 Series	DC-40	2.9	1.3	10	2.92mm
PS26 Series	DC-26.5	2.25	1.3	10	SMA
PS26L Series	DC-26.5	1.25	1.3	10	SMA

7. Filter-Coaxial

Coaxial Band Pass Filter

Part Number	Type	Center Frequency/GHz	Frequency Low 1dB Cut off/GHz	Freq High 1Db Cut off/GHz	Connector
AT-BPF-1113	BPF	12	11	13	SMA
AT-BPF-1518	BPF	16.5	15	18	SMA
AT-BPF-2226	BPF	24	22	26	2.92mm
AT-BPF-2432	BPF	28	24	32	2.92mm
AT-BPF-3242	BPF	37	32	42	2.92mm

8. Equalizer

Part Number	Type	Freq Low /GHz	Freq High /GHz	Loss at DC /Db	Loss at High/dB	Connector
AT-EQ03-26	Equalizer	DC	26.5	-3	-1.5	SMA
AT-EQ06-26	Equalizer	DC	26.5	-6	-1.5	SMA
AT-EQ10-26	Equalizer	DC	26.5	-10	-1.5	SMA
AT-EQ06-40	Equalizer	DC	40	-6	-2.5	2.92mm
AT-EQ10-40	Equalizer	DC	40	-10	-2.5	2.92mm
AT-EQ06-50	Equalizer	DC	50	-6	-3.0	2.4mm
AT-EQ10-50	Equalizer	DC	50	-10	-3.0	2.4mm

NEW Released

9. Analog Phase Shifter

9.1 180 Degree

Part Number	Type	Freq Low /GHz	Freq High /GHz	Phase /Degree	Control Vt /V	Connector
AT-APS-0207-180	180 Degree	2	7	180	0-14	SMA
AT-APS-0313-180	180 Degree	3	13	180	0-13	SMA
AT-APS-0518-180	180 Degree	5	18	180	0-13	SMA

9.2 360 Degree

Part Number	Type	Freq Low /GHz	Freq High /GHz	Phase /Degree	Control Vt /V	Connector
AT-APS-0102-360	360 Degree	0.95	2	360	0-14	SMA
AT-APS-0204-360	360 Degree	1.8	3.8	360	0-14	SMA
AT-APS-0306-360	360 Degree	3	6	360	0-14	SMA
AT-APS-0712-360	360 Degree	7	12.5	360	0-14	SMA
AT-APS-1118-360	360 Degree	11	18	360	0-14	SMA
AT-APS-1826-360	360 Degree	18	26.5	360	0-16	SMA
AT-APS-2531-360	360 Degree	25	31	360	0-14	2.92mm

10. Limiter

Part Number	Type	Freq Low /GHz	Freq High /GHz	Insertion Loss/Db	P1 /dBm	Leakage /dBm	Max Input /dBm	Connector
AT-LM06	Broadband	DC	6	0.3	+15	+17	+33	SMA
AT-LM12	Broadband	DC	12	0.4	+15	+17	+39	SMA
AT-LM18	Broadband	DC	18	0.4	+16	+19	+33	SMA
AT-LM20	Broadband	DC	18	0.7	+14	+16	+37	SMA
AT-LM40	Broadband	DC	40	1	+15	+18	+36	2.92mm

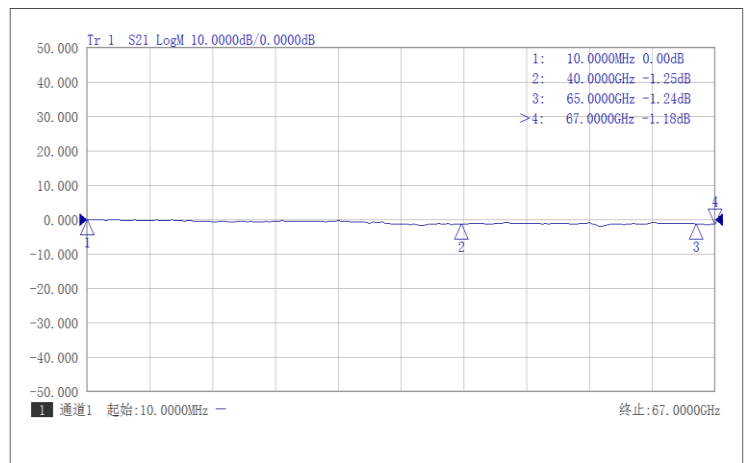
11. DC Block

Part Number	Type	Freq Low /MHz	Freq High /GHz	Insertion Loss/Db	Voltage /V	Connector
AT-DC-29M29F	DC Block	0.03	40	1	16	2.92mm
AT-DC-24M24F	DC Block	0.03	50	1	16	2.4mm
AT-DC-18M18F	DC Block	0.03	67	1.2	16	1.85mm
AT-DC-10M10F	DC Block	0.03	110	1.5	6.5	1.0mm

NEW Released

AT-DC-18M18F

30kHz-67GHz DC Block, 1.85mm Female

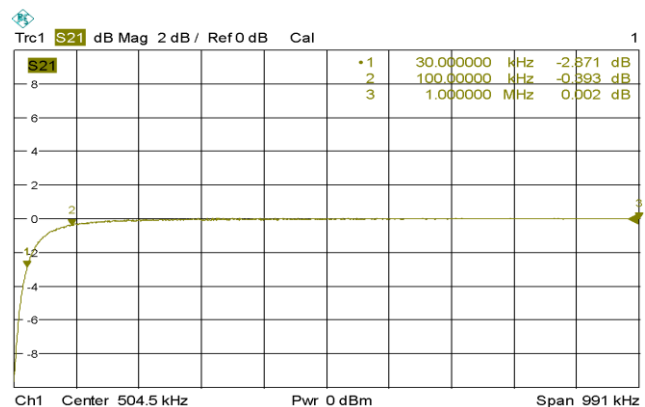


Advantages

- ✓ Frequency: 30kHz-67GHz
- ✓ Insertion Loss: -1.5dB
- ✓ Max Voltage: 16V
- ✓ Power Handling: +27dBm

Application

- ✓ 5G Communication
- ✓ Test Equipment
- ✓ ROF (RF Over Fiber)
- ✓ Radar System
- ✓ Optical Application



12. Attenuator

12.1 Analog Voltage Control Attenuator

Part Number	Type	Freq Low /GHz	Freq High /GHz	IL/Db	Range /dB	Voltage /V	Connector
AT-VVA-2050-35A	Analog	20	50	-3	30	-5 to 0	2.4mm
AT-VVA-3067-20	Analog	30	67	-3.5	20	-1.2 to 0	1.85mm
AT-VVA-3067-35	Analog	30	67	-6	35	-1.2 to 0	1.85mm
AT-VVA-30110G-35	Analog	30	110	-9	35	-1.2 to 0	1.0mm

12.2 Digital Control Attenuator

Part Number	Type	Freq Low /GHz	Freq High /GHz	Attenuation /dB	Step /dB	Connector
AT-DAT-0040-30	6bit Digital	9kHz	40	0 to 31.5	0.5	2.92mm
AT-DAT-0040-60	7bit Digital	9kHz	40	0 to 63	0.5	2.92mm

12.3 Fixed Attenuator

Part Number	Type	Freq Low /GHz	Freq High /GHz	Attenuation /dB	Connector 1	Connector 2
AT-FAT-XX-27	Fixed	DC	27	3/6/10/20/30	SMA Female	SMA Mal
AT-FAT-XX-40	Fixed	DC	40	3/6/10/20/30	2.92mm Female	2.92mm Male
AT-FAT-XX-50	Fixed	DC	50	3/6/10/20/30	2.4mm Female	2.4mm Male
AT-FAT-XX-67	Fixed	DC	67	3/6/10/20/30	1.85mm Female	1.85mm Male

13. Termination

Part Number	Type	Freq Low /GHz	Freq High /GHz	VSWR	Power/ W	Impedance /Ohms	Connector
AT-T50-SX	Termination	DC	18	1.2	2	50	SMA
AT-T50-35X	Termination	DC	27	1.2	2	50	3.5mm
AT-T50-29X	Termination	DC	40	1.25	1	50	2.92mm
AT-T50-24X	Termination	DC	50	1.35	1	50	2.4mm
AT-T50-18X	Termination	DC	67	1.5	1	67	1.85mm



14. Switch

14.1 MMIC Based Switch

Part Number	Type	Freq Low /GHz	Freq High /GHz	IL /DB	Isolation /db	P1/dBm	Control /V	Connector
AT-SPDT-3567B	SPDT	35	67	-6	-25	-	-1.2V/0	1.85mm
AT-SPDT-30110G	SPDT	30	110	-9	-20	-	-1.2V/0	1.0mm
AT-SPDT-0070C	SPDT	9kHz	70	-4	-35	+23	+/-3V	1.85mm
AT-SPDT-0067T	SPDT	0.1	67	-3.5	-30	+20	+/-5V	1.85mm
AT-SP4T-0067T	SP4T	0.1	67	-4.5	-25	+20	+/-5V	1.85mm
AT-SP8T-0067T	SP8T	0.1	67	-5.5	-45	+20	+/-5V	1.85mm
AT-SP16T-0067T	SP8T	0.1	67	-5.5	-45	+20	+/-5V	1.85mm

NEW Released

14.2 GaAs PIN Reflector Based Switch

Part Number	Type	Freq Low /GHz	Freq High /GHz	IL /DB	Isolation/dB	P1 /dBm	Style	Connector
AT-SPST-0050XH-R	SPST	0.05	50	-2.5	33	+28	Reflective	2.4mm
AT-SPST-0040XH-R	SPST	0.1	40	-2.4	38	+30	Reflective	2.92mm
AT-SPST-0040XL-A	SPST	0.1	40	-3.1	33	+21	Absorptive	2.92mm
AT-SPST-1040XH-R	SPST	10	40	-2.4	38	+28	Reflective	2.92mm
AT-SPST-0067T	SPST	0.1	67	-3	25	+20	Reflective	1.85mm
AT-SPDT-0040XH-R	SPDT	0.05	40	-2.6	43	+28	Reflective	2.92mm
AT-SPDT-0040XL-R	SPDT	0.1	40	-2.9	50	+24	Reflective	2.92mm
AT-SPDT-0220GXH-R	SPDT	2	20	-2.3	46	+26	Reflective	SMA
AT-SPDT-1040XL-R	SPDT	10	40	-2.9	35	+20	Reflective	2.92mm
AT-SPDT-0067T	SPDT	0.1	67	-3.5	25	+20	Reflective	1.85mm
AT-SP3T-0040XH-R	SP3T	0.05	40	-2.7	42	+28	Reflective	2.92mm
AT-SP3T-0040XL-R	SP3T	0.05	40	-2.7	45	+24	Reflective	2.92mm
AT-SP3T-0220EXH-R	SP3T	2	20	-2.3	46	+25	Reflective	SMA
AT-SP3T-1040XL-R	SP3T	10	40	-2.7	39	+23	Reflective	2.92mm
AT-SP4T-0020XH-R	SP4T	0.05	20	-2.2	52	+28	Reflective	SMA
AT-SP4T-0026XL-R	SP4T	0.1	26	-2.2	52	+23	Reflective	SMA
AT-SP4T-0220XH-R	SP4T	2	20	-2.4	57	+25	Reflective	SMA
AT-SP4T-1040XL-R	SP4T	10	40	-3.2	40	+22	Reflective	2.92mm
AT-SP4T-0067T	SP4T	0.1	67	-4.5	25	+20	Reflective	1.85mm
AT-SP5T-0040XH-R	SP5T	0.1	40	-3.2	50	+28	Reflective	2.92mm
AT-SP5T-1040XL-R	SP5T	10	40	-3.5	44	+22	Reflective	2.92mm
AT-SP6T-0040XH-R	SP6T	0.1	40	-3.2	51	+28	Reflective	2.92mm
AT-SP6T-1040XL-R	SP6T	10	40	-3.3	51	+24	Reflective	2.92mm
AT-SP8T-0026XH-R	SP8T	0.1	26.5	-2.2	51	+28	Reflective	SMA
AT-SP8T-0040XH-R	SP8T	0.1	40	-3.2	51	+28	Reflective	2.92mm
AT-SP8T-1040XL-R	SP8T	10	40	-3.6	45	+25	Reflective	2.92mm
AT-SP8T-0067T	SP8T	0.1	67	-5.5	45	+20	Reflective	1.85mm
AT-SP16T-0026XH-R	SP16T	0.1	26.5	-6	51	+23	Reflective	SMA
AT-SP16T-0040XH-R	SP16T	0.1	40	-8	51	+23	Reflective	2.92mm
AT-SP16T-0067T	SP16T	0.1	67	-8	45	+20	Reflective	1.85mm

15. Power Divider

15.1 Resistor Power Divider

Part Number	Type	Freq Low /GHz	Freq High /GHz	IL /DB	Amplitude Balance /dB	Degree Balance /Degree	VSWR	Connector
AT-RPD2-26	2Ways	DC	26.5	-6	+/-0.3	+/-4	1.5	SMA
AT-RPD2-40	2Ways	DC	40	-6	+/-0.3	+/-4	1.5	2.92mm
AT-RPD2-50	2Ways	DC	50	-6	+/-0.8	+/-7	1.5	2.4mm
AT-RPD2-67	2Ways	DC	67	-6	+/-0.8	+/-8	2.0	1.85mm
AT-RPD4-40	2Ways	DC	40	-12	+/-0.6	+/-7	1.5	2.92mm

15.2 Wilkinson Power Divider

Part Number	Type	Freq Low /GHz	Freq High /GHz	IL /DB	Amplitude Balance /dB	Degree Balance /Degree	VSWR	Connector
AT-PD2-0R518	2Ways	0.5	18	-0.9	+/-0.3	+/-5	1.6	SMA
AT-PD2-0126	2Ways	1	26.5	-1.2	+/-0.5	+/-6	1.7	SMA
AT-PD2-0140	2Ways	1	40	-2.2	+/-0.5	+/-8	2.0	2.92mm
AT-PD2-0240	2Ways	2	40	-1.8	+/-0.4	+/-5	1.8	2.92mm
AT-PD2-0640	2Ways	6	40	-1.5	+/-0.4	+/-5	1.7	2.92mm
AT-PD2-1026	2Ways	10	26.5	-1.5	+/-0.4	+/-5	1.7	SMA
AT-PD2-1840	2Ways	18	40	-1.5	+/-0.4	+/-4	1.6	2.92mm
AT-PD4-0R518	4Ways	0.5	18	-2.5	+/-0.4	+/-8	2.0	SMA
AT-PD4-0218	4Ways	2	18	-1.8	+/-0.4	+/-6	1.8	SMA
AT-PD4-0240	4Ways	2	40	-2	+/-0.5	+/-10	2.1	2.92mm
AT-PD4-1840	4Ways	18	40	-1.6	+/-0.4	+/-8	1.8	2.92mm
AT-PD8-0R518	8Ways	0.5	18	-6.5	+/-0.8	+/-12	2.0	SMA
AT-PD8-0118	8Ways	1	18	-4	+/-0.5	+/-10	1.8	SMA
AT-PD8-0126	8Ways	1	26.5	-6	+/-0.8	+/-12	2.2	SMA
AT-PD8-0640	8Ways	6	40	-3.2	+/-0.5	+/-6	2.5	2.92mm
AT-PD8-1840	8Ways	18	40	-2.5	+/-0.5	+/-6	2	2.92mm
AT-PD16-0618	16Ways	6	18	-3.5	+/-0.5	+/-6	2	SMA
AT-PD16-1840	16Ways	18	40	-3.5	+/-0.5	+/-6	2	2.92mm

16. Hybrid

90 Degree Hybrid

Part Number	Type	Freq Low /GHz	Freq High /GHz	IL /DB	Amplitude Balance /dB	Degree Balance /Degree	VSWR	Connector
AT-H90-0106	90 Degree	1	6	1	+/-0.7	+/-5	1.25	SMA
AT-H90-0218	90 Degree	2	18	1.3	+/-0.7	+/-6	1.5	SMA
AT-H90-0618	90 Degree	6	18	1	+/-0.6	+/-5	1.5	SMA

180 Degree Hybrid

Part Number	Type	Freq Low /GHz	Freq High /GHz	IL /DB	Amplitude Balance /dB	Degree Balance /Degree	VSWR	Connector
AT-H180-0102	180 Degree	1	2	0.5	+/-0.5	+/-10	1.25	SMA
AT-H180-0218	180 Degree	2	18	2.3	+/-0.7	+/-10	1.5	SMA

17. Directional Coupler

Part Number	Type	Freq Low /GHz	Freq High /GHz	IL /DB	Directivity /dB	Power Handling /W	VSWR	Connector
AT-C20-0R508	20dB	0.5	8	-0.8	14	20	1.3	SMA
AT-C30-0118	30dB	1	18	-1	12	20	1.5	SMA
AT-C20-0140	20dB	1	40	-2.8	10	20	1.7	2.92mm
AT-C10-0167	10dB	1	67	-3.8	8	20	1.9	1.85mm
AT-C30-0218	30dB	2	18	-0.5	12	20	1.5	2.92mm
AT-C30-0618	30dB	6	18	-0.6	14	20	1.5	SMA
AT-C10-0840	10dB	8	40	-1.6	10	20	1.6	2.92mm
AT-C30-1840	30dB	18	40	-1.6	10	20	1.6	2.92mm
AT-C10-1850	10dB	18	50	-1.6	10	20	1.6	2.4mm



18. Power Detector

Part Number	Type	Freq Low /GHz	Freq High /GHz	Power Range	Dynamic /dB	Vdd	Connector
AT-DET-0043E	Envelope	0.5	43.5	-25 to +15	40	+5V	2.92mm
AT-PD-5067-N1	Envelope	50	67	-20 to 0	20	+5V	1.85mm

19. Bias Tee

Part Number	Type	Freq Low	Freq High /GHz	Insertion Loss/dB	DC Voltage	Current/A	Connector
AT-BTL-0040LC	Bias Tee	30kHz	40	-1	16V	0.23A	2.92mm
AT-BTL-0050LC	Bias Tee	30kHz	50	-2	16V	0.23A	2.4mm
AT-BTL-0070LC	Bias Tee	30kHz	70	-3	16V	0.23A	1.85mm